



KOMODO NATIONAL PARK

July to September | Labuan Bajo to Labuan Bajo

7 nights | Gili Lawa, Tatawa, Makassar Reef, Wainilu, Batu Bolong, Padar, Nusa Kode, Manta Alley

ITINERARY HIGHLIGHTS

- Komodo National Park is world renowned for the excellent quality and variety of diving.
- Generally, this cruise visits the Central and Southern Sections, depending on sea and wind conditions we may visit the Central and Northern Sections.
- In the north, the black sands of the Sangeang Volcano with its critters and bubble flows and the beautiful reefs surrounding Gili Banta.
- In the south, manta action and nutrient rich reefs with ocean flow from the Indian Ocean.
- Central section reefs and small islands teem with life fed by the currents running between the islands of Komodo and Rinca.

The Komodo National Park is world renowned for the excellent quality and variety of diving. Water temperatures change between the north and south of the Park and provide varied encounters. In the north we have the black sands of the Sangeang Volcano with its critters and bubble flows and the reefs around Gili Banta. The south provides cooler temperatures with manta action and nutrient rich reefs with ocean flow from the Indian Ocean. The central section provides reefs and small islands teeming with life fed by the currents running between the islands of Komodo and Rinca. Add to this the chance to see the famous Komodo Dragon in its natural habitat, beautiful beaches, look-outs to climb and you have a paradise both below and above the water.

A 7-night cruise generally takes in sites in the Central and Southern Sections of the Komodo National Park. On occasions the cruise will take in the Central and Northern Sections depending on sea and wind conditions, especially related to southerly swells.

- **Northern Section & Sumbawa:** Sangeang Volcano, Gili Banta, Batu Moncho
- **Central Section:** Gili Lawa, Tatawa, Siaba Besar, Makassar Reef, Wainilu, Batu Bolong
- **Southern Section:** Padar, Nusa Kode, Manta Alley

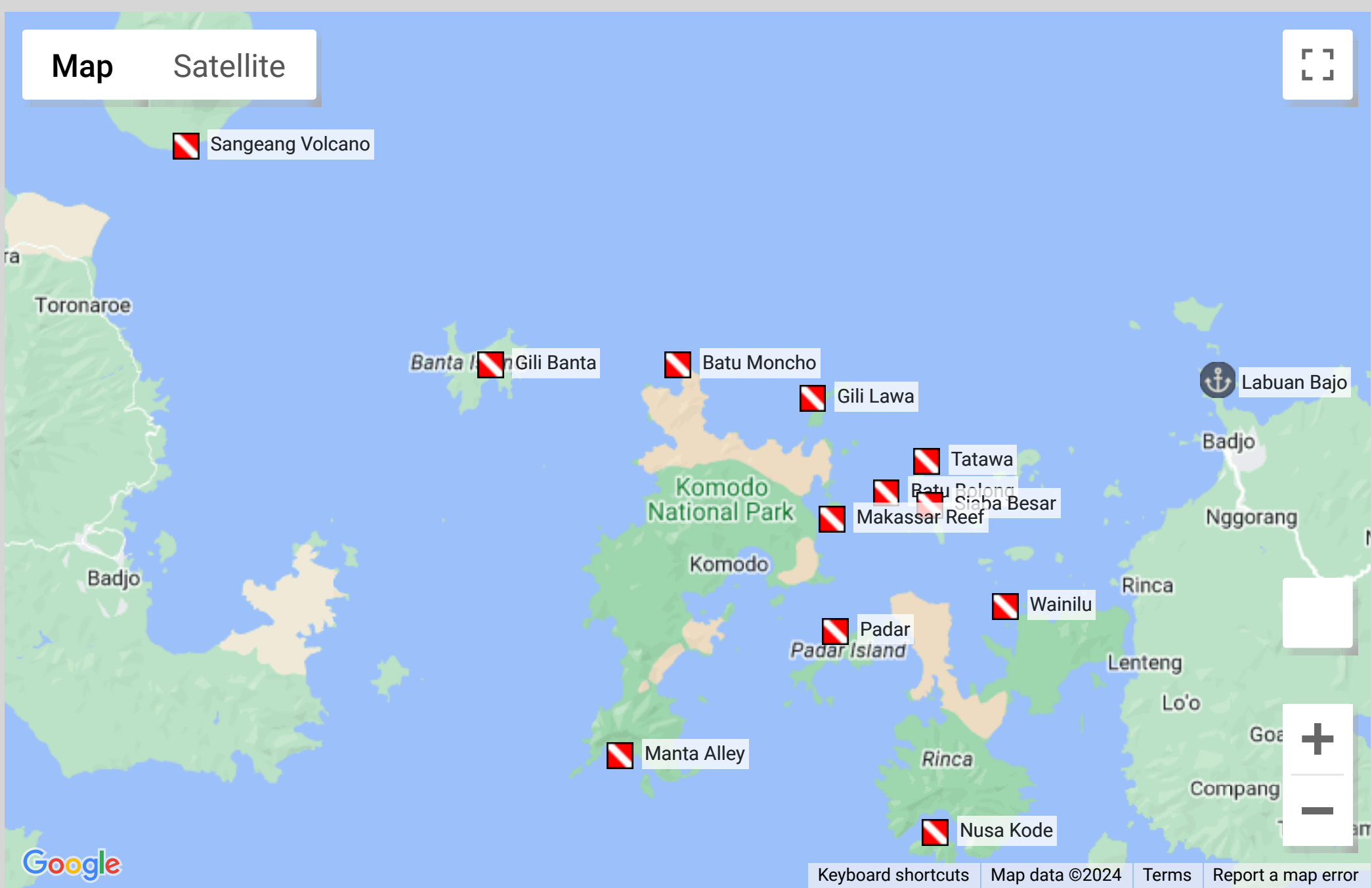
Explore the map below for dive sites and descriptions.

Land visits: See the famous Komodo Dragon in its natural habitat, beautiful beaches, look-outs to climb and a paradise both below and above the water. Visit to the traditional village of Bonto on Sangeang Island.

Please note: In South Komodo the water temperatures can drop from 28°C to around 20°C. A 5mm wetsuit and hood is highly recommended for this region. Water temperatures in the central and northern section of the park average 27-28°C. Please be aware the dive sites and areas mentioned in our itineraries are not guaranteed. They are subject to change based on weather conditions and are at the discretion of our cruise director/captain. This is to ensure we provide the best sightings and activities possible during your dive experience while also prioritising your safety.

DIVE SITES

Dive sites & areas that we may visit are subject to weather conditions.



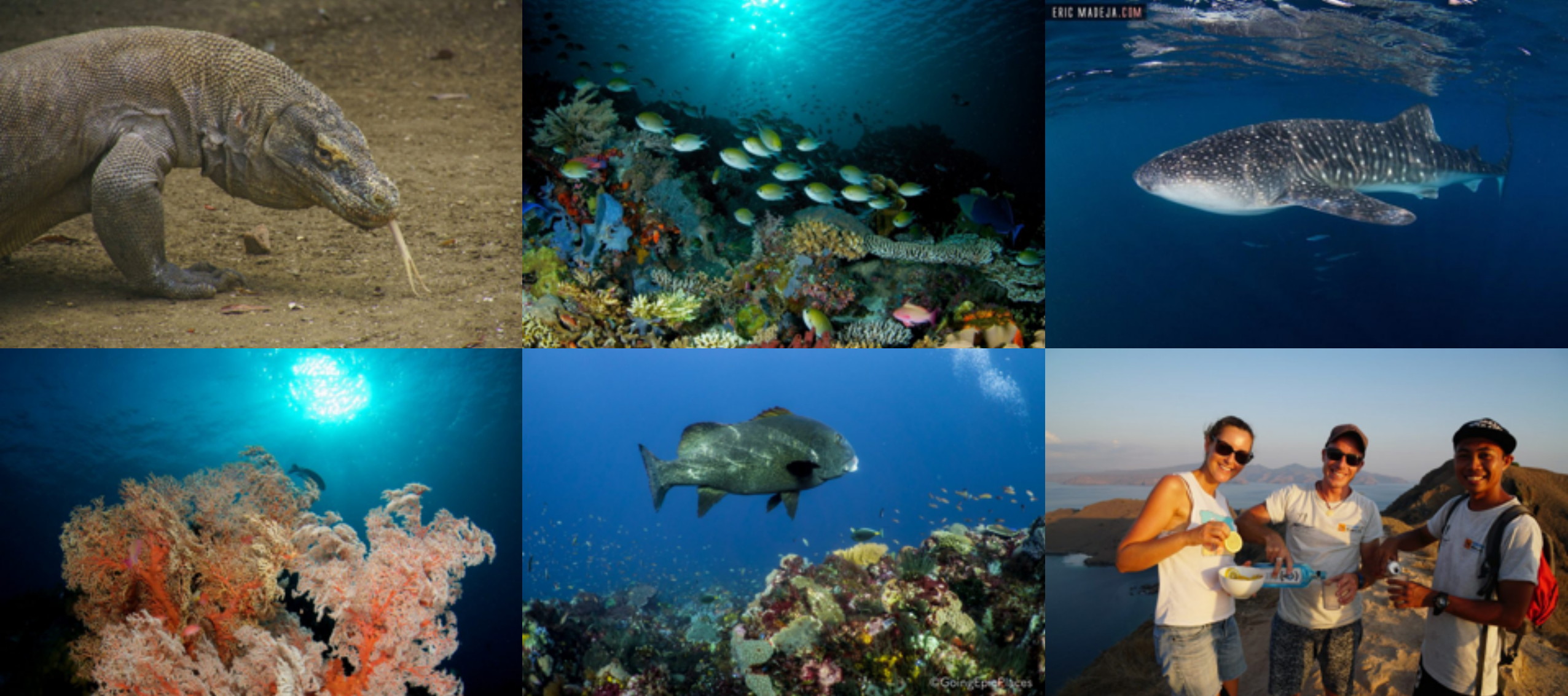
ALSO IMPORTANT

Check Dive & Depart Labuan Bajo

Once onboard there will be a safety briefing, crew introduction, complete and check dive paperwork, cabin allocation and boat orientation. The first dive is a check dive.

Return to Labuan Bajo

On the last diving day, the day before disembarkation, you will have the opportunity to visit the Komodo Dragons on Rinca Island. One dive is offered on this day, after breakfast and whilst observing the rule of no diving within 24 hours of reaching altitude. Evening-time pack up diving equipment and settle any outstanding bills ready to depart for the airport or hotel early the following morning.



ITINERARY EXPERIENCE

Advanced, 50 dives

This itinerary is not for beginners with many dives below 18m and currents can vary from medium to extremely strong. We recommend that you have 50 logged dives and require that you are a Deep Diver/Advanced Open Water Diver or equivalent to join this trip. Divers may find many dives challenging and may be asked by the Cruise Director to skip dives that are not suitable for their diving experience. Diving is from zodiacs to give precise entry and exit points.